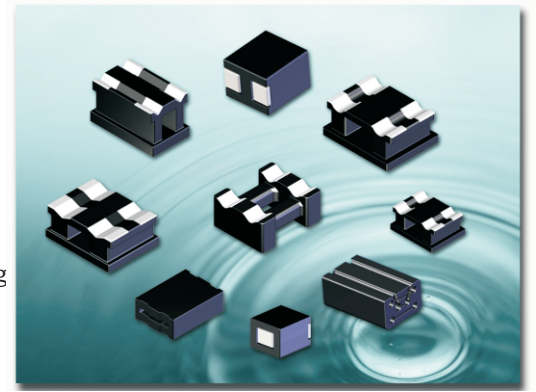


SMB TYPE

(1) ORDERING CODE 產品名稱

F4D	SMB	7.6	x	3.2	x	6	(T)
Material	Type	Length(A)		Thickness(B)		Width(D)	Plating
材質	形狀	長度(A)		厚度(B)		寬度(D)	鍍銀



(2) SUITABLE MATERIAL (適用材質)

F4D ,C5A ,C5,C6

(3) SHAPE (圖形標示)

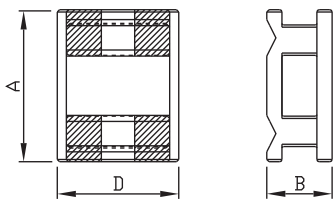


Fig 1

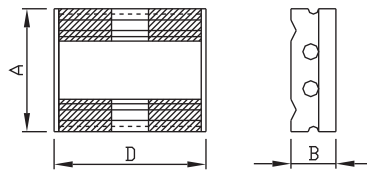


Fig 2

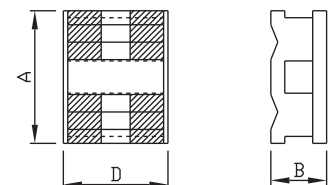


Fig 3

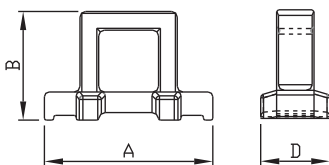


Fig 4

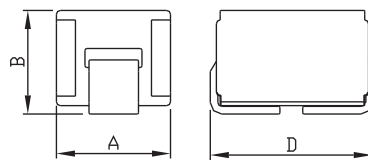


Fig 5

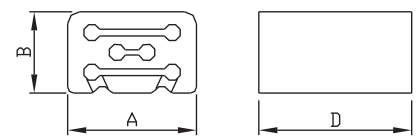


Fig 6

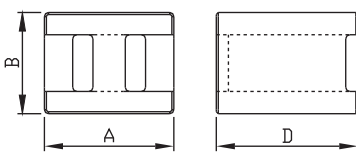


Fig 7

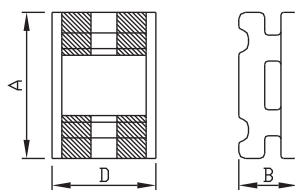


Fig 8

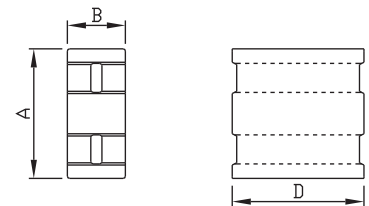


Fig 9

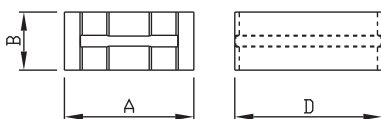


Fig 10

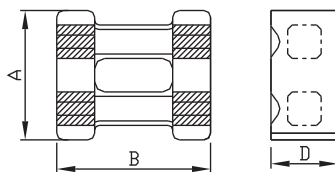


Fig 11

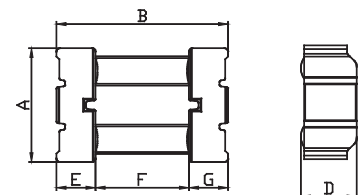


Fig 12

(4)DIMENSIONS(尺寸)

Unit:mm

NO.	CORE	Fig	A	B	C ψ	D	E	F
1	SMB 3x2.5x4	5	3.00±0.20	2.50±0.20		4.00±0.20		
2	SMB 3.2x2.5x3.5	7	3.20±0.15	2.50±0.15		3.50±0.15		
3	SMB 4.5x2.5x3.7	7	4.50±0.15	2.50±0.15		3.70±0.15		
4	SMB 4.5x1.8x3.2	8	4.50±0.15	1.80±0.15		3.20±0.15		
5	SMB 4.65x1.7x5.75	2	4.65±0.20	1.70±0.20		5.75±0.20		
6	SMB 5.8x2.6x7.65	9	5.80±0.15	2.60±0.15		7.65±0.15		
7	SMB 5x5x8.5	3	5.00±0.20	5.00±0.20		8.50±0.30		
8	SMB 5.8x6.9x3	11	5.80±0.15	6.90±0.20		3.00±0.15		
9	SMB 5.8x2.6x4.5	10	5.80±0.15	2.60±0.15		4.50±0.15		
10	SMB 6.13x9x2.75	12	6.13±0.20	9.00±0.20		2.75±0.20		
11	SMB 6.5x4.1x9.9	6	6.50±0.20	4.10±0.20		9.90±0.30		
12	SMB 6.6x2.4x5.0	10	6.60±0.15	2.40±0.15		5.00±0.15		
13	SMB 6.6x2.45x5.2	10	6.60±0.15	2.45±0.15		5.20±0.15		
14	SMB 6.9x9x3.7	11	6.90±0.20	9.00±0.20		3.70±0.20		
15	SMB 7.5x5x8.8	1	7.50±0.20	5.00±0.20		8.80±0.20		
16	SMB 7.6x3.2x6	3	7.60±0.20	3.20±0.20		6.00±0.20	C1=1.85	C2=1.5
17	SMB 7.6x3.2x6	3	7.60±0.20	3.20±0.20		6.00±0.20	C1=2.6	C2=1.5
18	SMB 9x5.8x3.7	4	9.00±0.30	5.80±0.20		3.70±0.20		
19	SMB 10x4.3x8	1	10.0±0.30	4.30±0.20		8.00±0.30		
20	SMB 10x5x8	3	10.0±0.30	5.00±0.20		8.00±0.30		
21	SMB 10.7x11.8x5.2	11	10.7±0.30	11.8±0.30		5.20±0.20		
22	SMB 12x4.5x10	1	12.0±0.30	4.50±0.20		10.0±0.30		
23	SMB 12x6x10	1	12.0±0.30	6.00±0.20		10.0±0.30		
24	SMB 13x15x5.5	11	13.0±0.30	15.0±0.30		5.50±0.20		