

R TYPE

(1) ORDERING CODE 產品名稱

C6 R 1.65 x 14 (R)

Material Type Outside Diameter(A φ) Length(D) Grinding
 材質 形狀 外徑(A φ) 長度(D) 研磨外徑

(2) SUITABLE MATERIAL(適用材質)

F4D,F8,C5A,C5,C5C,C6,E1C,E2,E2D,E3,Y5E,Y8B,E2F,Y9,Y9D,Y11

(3) SHAPE(圖形標示)

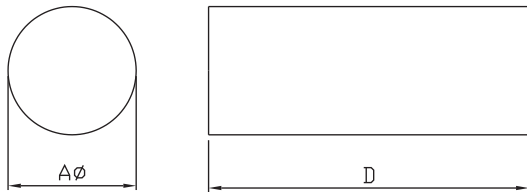
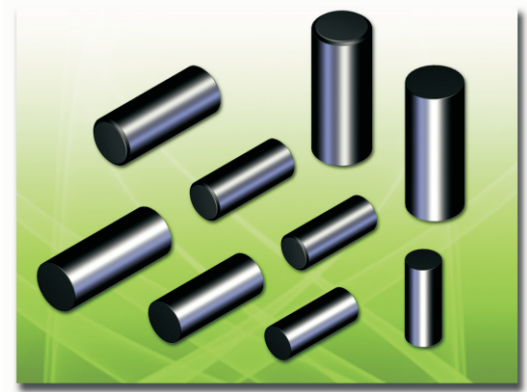


Fig 1

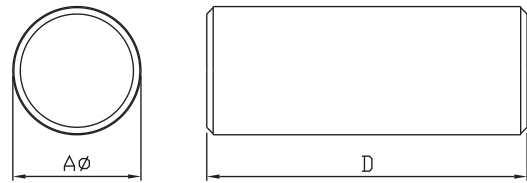


Fig 2

(4) DIMENSIONS(尺寸)

Unit:mm

NO.	CORE	Fig	A φ	D
1	R 1×2.65	1	1.00±0.10	2.65±0.15
2	R 1.2×4.5	1	1.20±0.10	4.50±0.20
3	R 1.5×5	1	1.50±0.10	5.00±0.20
4	R 1.65×14	1	1.65±0.10	14.0±0.30
5	R 1.85×7.7	1	1.85±0.10	7.70±0.20
6	R 1.9×6.5	1	1.90±0.10	6.50±0.20
7	R 2×7.7	1	2.00±0.10	7.70±0.30
8	R 2×14	1	2.00±0.10	14.0±0.30
9	R 2.26×2.15	1	2.26±0.10	2.15±0.20
10	R 2.6×20	1	2.60±0.10	20.0±0.40
11	R 3×10	2	3.00±0.10	10.0±0.30
12	R 3×12	2	3.00±0.10	12.0±0.30
13	R 3×15	2	3.00±0.10	15.0±0.30
14	R 3×25	2	3.00±0.10	25.0±0.50
15	R 3.3×17.5	2	3.30±0.10	17.5±0.30
16	R 3.5×20	2	3.50±0.10	20.0±0.40
17	R 3.5×25	2	3.50±0.10	25.0±0.50
18	R 4×10	2	4.00±0.10	10.0±0.30
19	R 4×15	2	4.00±0.20	15.0±0.30
20	R 4×19	2	4.00±0.20	19.0±0.30
21	R 4×25	2	4.00±0.20	25.0±0.50

DIMENSIONS(尺寸)

Unit:mm

NO.	CORE	Fig	A ϕ	D
22	R 4.4x20	2	4.40±0.20	20.0±0.40
23	R 5x18	2	5.00±0.20	18.0±0.30
24	R 5×20	2	5.00±0.20	20.0±0.40
25	R 5x25	2	5.00±0.20	25.0±0.50
26	R 5x30	2	5.00±0.20	30.0±0.50
27	R 5×38	2	5.00±0.20	38.0±0.80
28	R 5.2x25	2	5.20±0.20	25.0±0.50
29	R 5.35x15	2	5.35±0.20	15.0±0.30
30	R 5.5x15	2	5.50±0.20	15.0±0.30
31	R 5.5x21	2	5.50±0.20	21.0±0.40
32	R 5.85x18	2	5.85±0.20	18.0±0.30
33	R 5.8×30	2	5.80±0.20	30.0±0.40
34	R 6×10	2	6.00±0.20	10.0±0.30
35	R 6x15	2	6.00±0.20	15.0±0.30
36	R 6x20	2	6.00±0.20	20.0±0.40
37	R 6x25	2	6.00±0.20	25.0±0.50
38	R 6x30	2	6.00±0.20	30.0±0.50
39	R 6x38	2	6.00±0.20	38.0±0.60
40	R 6.35x19.5	2	6.35±0.20	19.5±0.30
41	R 6.35x30	2	6.35±0.20	30.0±0.50
42	R 6.5x38	2	6.50±0.20	38.0±0.60
43	R 7x20	2	7.00±0.20	20.0±0.40
44	R 7×25	2	7.00±0.20	25.0±0.40
45	R 7x38	2	7.00±0.20	38.0±0.60
46	R 7.5×20	2	7.50±0.20	20.0±0.40
47	R 8x18.5	2	8.00±0.20	18.5±0.30
48	R 8x20	2	8.00±0.20	20.0±0.40
49	R 8×30	2	8.00±0.20	30.0±0.50
50	R 8x32	2	8.00±0.20	32.0±0.60
51	R 8x38	2	8.00±0.20	38.0±0.60
52	R 8.6×12	2	8.60±0.20	12.0±0.30
53	R 9.5x22.5	2	9.50±0.20	22.5±0.40
54	R 10x15	2	10.0±0.30	15.0±0.30
55	R 10×20	2	10.0±0.30	20.0±0.40
56	R 10x25	2	10.0±0.30	25.0±0.50
57	R 10x30	2	10.0±0.30	30.0±0.50
58	R 10x38	2	10.0±0.30	38.0±0.60
59	R 11×30	2	11.0±0.30	30.0±0.50
60	R 12x25	2	12.0±0.30	25.0±0.50
61	R 16x12	2	16.0±0.30	12.0±0.30
62	R 19x20	2	19.0±0.30	20.0±0.40
63	R 19×38	2	19.0±0.30	38.0±0.60
64	R 20x25	2	20.0±0.30	25.0±0.50
65	R 21x27	2	21.0±0.40	27.0±0.50
66	R 21x40	2	21.0±0.40	40.0±0.80